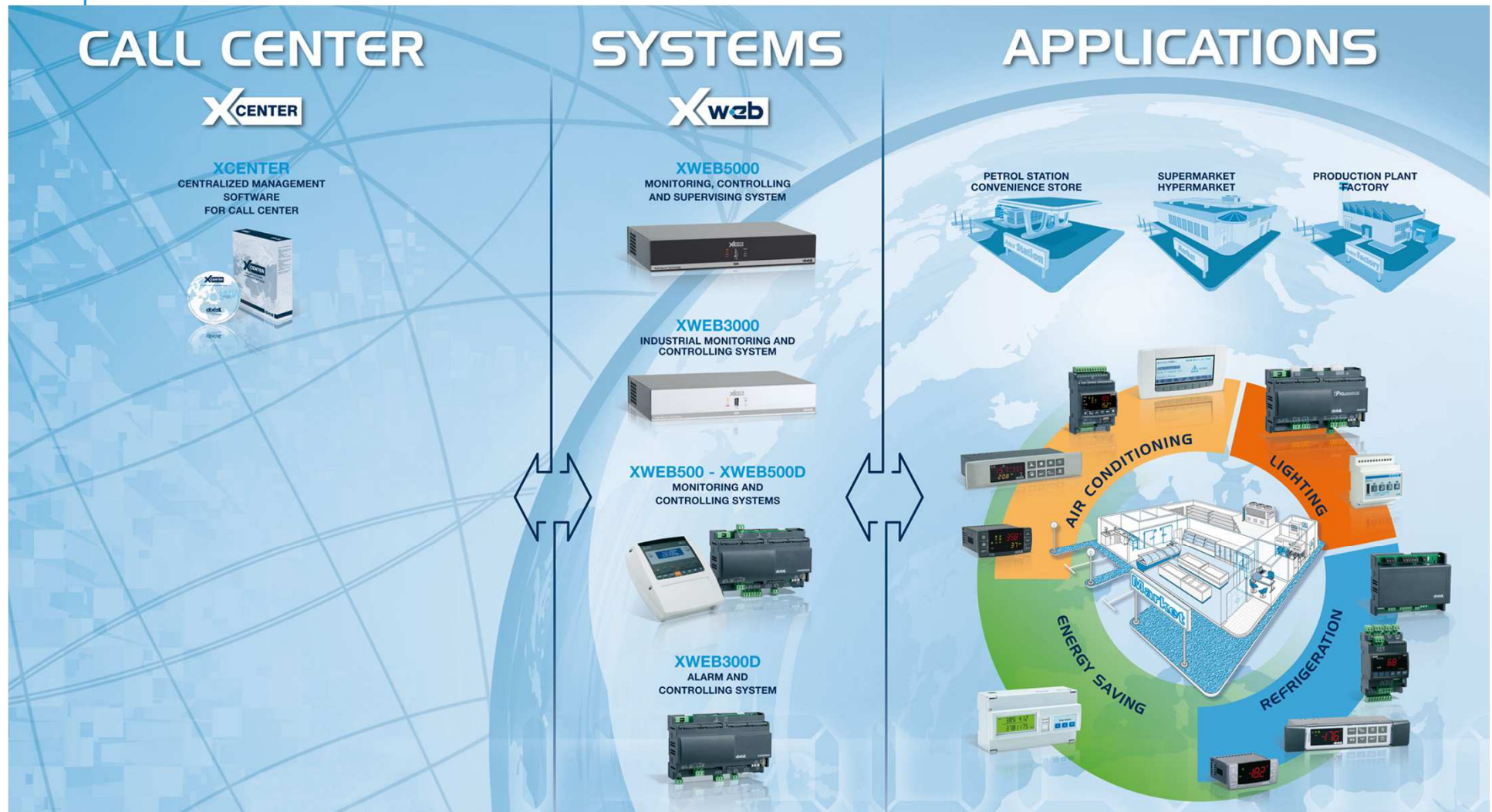


# ***Dixell systems 2012***



# The Solutions...

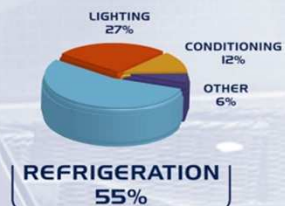
... for GLOBAL RETAIL



# The Solutions...

... for ENERGY SAVING

Typical Allocation of  
Energy Consumption  
in a Supermarket



UP to 30% of  
ENERGY SAVING



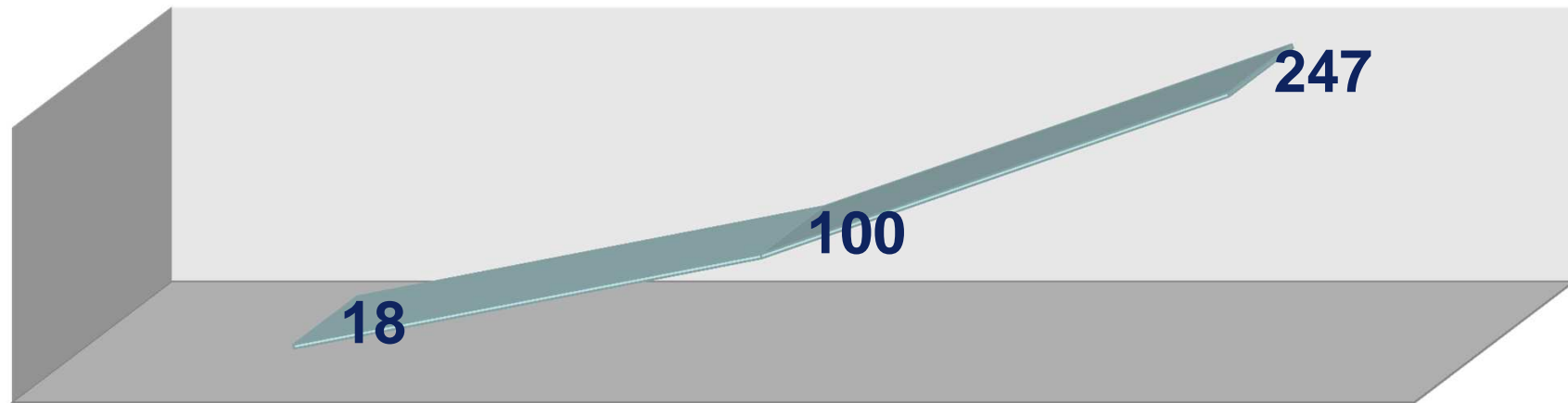


**dixell®**

 **EMERSON™**  
Climate Technologies

# ***The Range - SYSTEMS***

**XWEB Series per number of Modbus addresses**



**XWEB300**



**XWEB500**



**XWEB3000/  
5000**



**dixell®**

  
**EMERSON™**  
Climate Technologies



# *The Range - SYSTEMS*

## **XWEB300/500D**

### **CONNECTIVITY**



**Analog modem  
On/Off Board**



**dixell®**

**GSM**



**GPRS  
On Board**



**3G via Ethernet**



  
**EMERSON™**  
Climate Technologies

# *The Range - SYSTEMS*



## **XWEB300D**

**ALARMS and MONITORING**

- **Compact but effective solution for small installations such as**
  - **Convenience store**
  - **Petrol stations**
  - **Warehouses**
- **Full connectivity: Ethernet, GSM or GPRS modem (built-in), External modem**
- **Up to 6/18 devices (including 3<sup>rd</sup> party devices)**



# The Range - SYSTEMS



## XWEB300D



### ALARMS and MONITORING

○ WEB Interface

The screenshot displays the web interface for the XWEB300D. At the top, there is a navigation bar with links: Configuration, Devices, Data, Alarms, Tools, and Information. The Emerson Climate Technologies logo is on the right. Below the navigation bar, a dark blue header shows the user 'XWEB500\_DMZ' and a 'Logout' button. The main content area is divided into three sections. The 'Server' section on the left shows status for Data Reading (Active), Data Recording (Active), Alarm Sending (Active), and Server Status (OK), with buttons for Start/stop, Status, and Sync time/date. The 'Active Alarms' section on the right has a 'Refresh' button and a table of active alarms. The 'Shortcuts' section at the bottom left contains icons for Parameters, Single View, Runtime, Excel exporting, Export to USB, Graphs, Scheduler, Performance meter, and Server log.

Adr	Device	Alarm	Start
1	1 - Meat	High Value Pb1	10/12/2012 09:39:25
7	7 - Vegetables	High Value Pb1	10/12/2012 08:14:59
11	11 - Power meter	No Link	30/11/2012 12:01:16





# The Range - SYSTEMS



## XWEB300D



### ALARMS and MONITORING



- Temperature logs
- HACCP Compliant
- Data Export for analysis

# The Range - SYSTEMS



## XWEB300D



### ALARMS and MONITORING

From: xweb500dmz@emerson.com Sent: lunedì 10/12/2012 10:56  
To:   
Cc:   
Subject: -XWEB500\_DMZ -Default Type -New alarms

System Name: XWEB500\_DMZ  
Date: 10:51 10/12/2012  
Message: [eMail](#)  
Alarm Type: Default Type

**NEW ALARM START – High Value PB1**

Adr	Device Name	Model	Alarm Name	Start
1	Meat	XM670K_0032000D0004	HI Value Pb1	10:51 10/12/2012
Data not available				

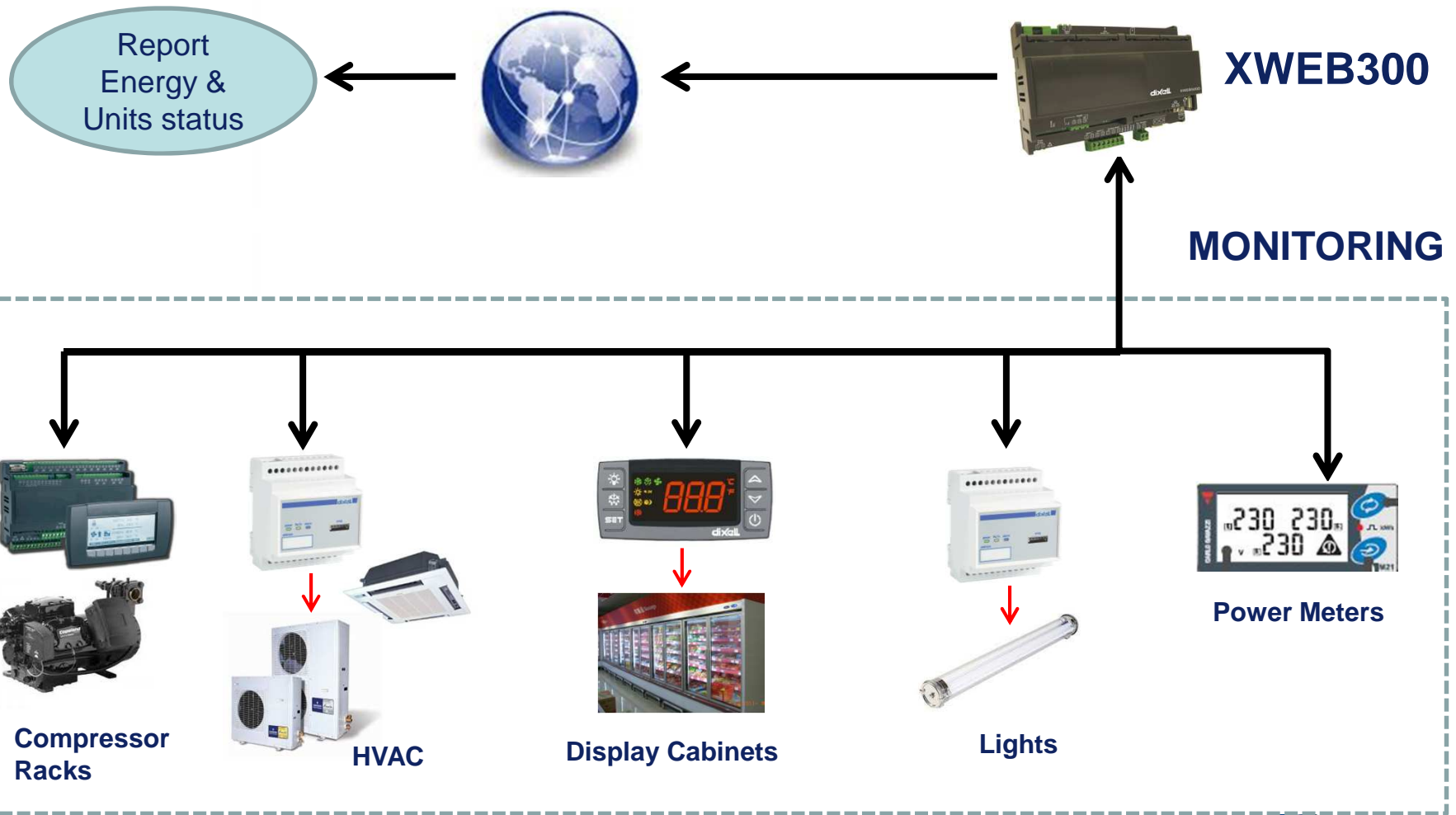
**OTHERS ACTIVE ALARMS**

Adr	Device Name	Model	Alarm Name	Start
7	Vegetables	XM670K_0032000D0004	HI Value Pb1	10:51 10/12/2012
11	Power meter	EM21_002000080008	No Link	10:51 10/12/2012

- Alarms Management
  - Email
  - SMS
  - FAX



# The Range - SYSTEMS



**dixell**

**EMERSON**  
Climate Technologies

# *The Range - SYSTEMS*



## **XWEB500**

**ALARMS and CONTROL**

- **Compact but powerful solution for small and medium installations such as**
  - **Supermarkets**
  - **Larger Refrigerated Warehouses**
- **Automated tasks and algorithms for Energy Saving**
  - **Lights**
  - **Defrosts**
  - **Suction Pressure Optimization**
- **Up to 36/50/100 devices**



# The Range - SYSTEMS

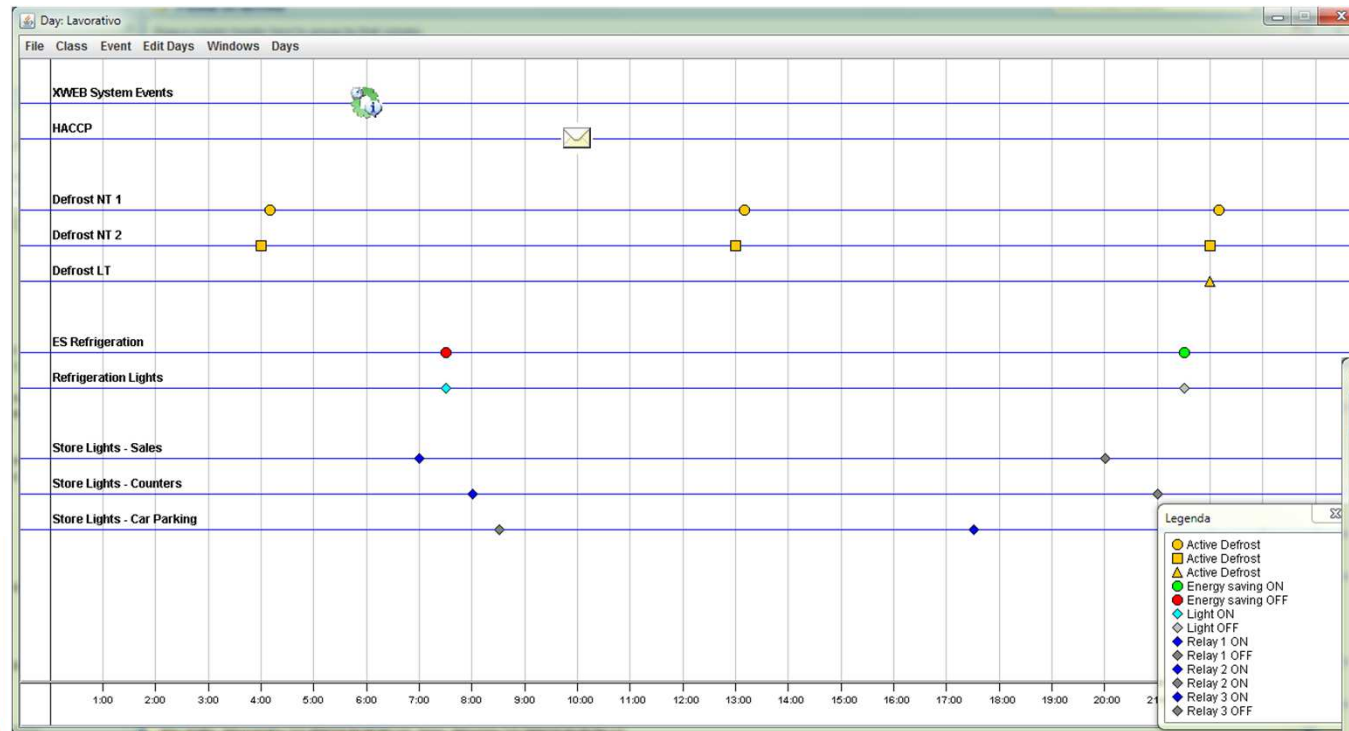


## XWEB500

### ALARMS and CONTROL



- Scheduled Tasks
  - ES Set points
  - HACCP Export
  - Defrosts
  - Lights
  - Curtains
  - ...



dixell



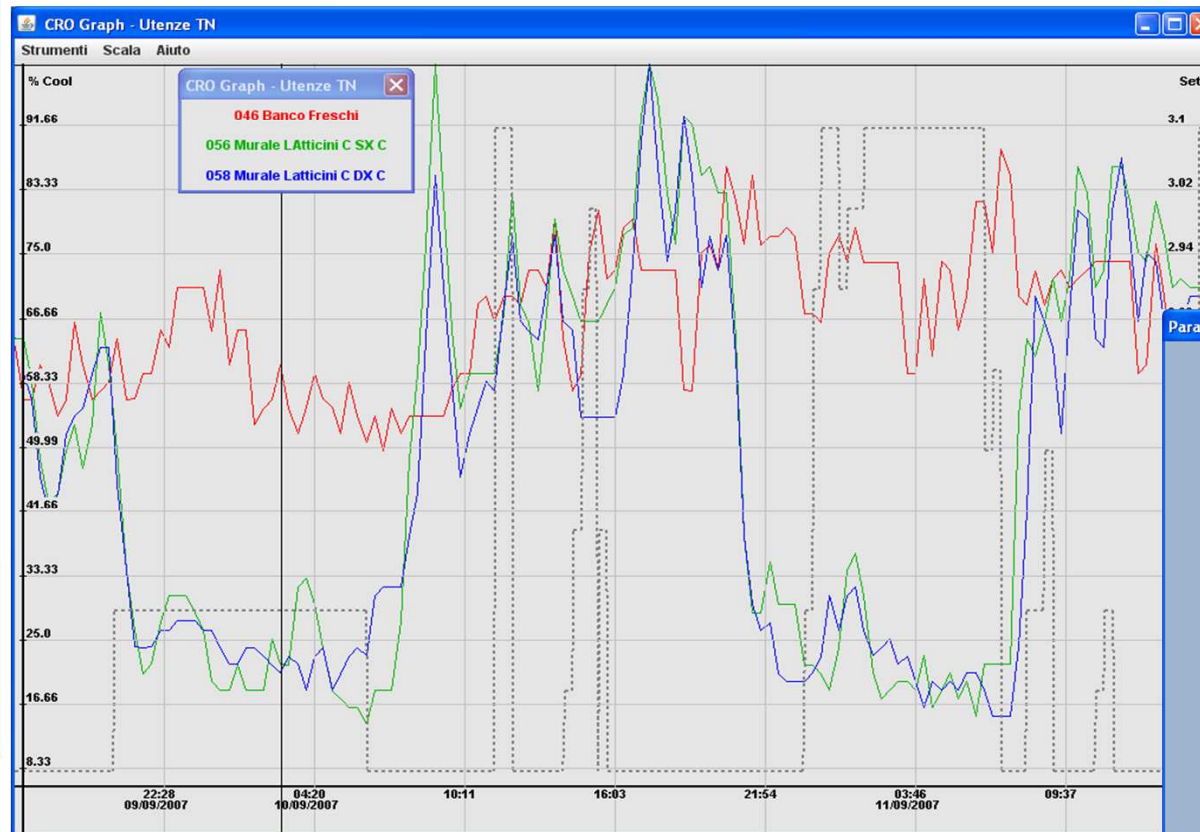


# The Range - SYSTEMS



## XWEB500

### ALARMS and CONTROL



○ Compressor Rack Opt.

Parameters

Engine Parameters

Engine is: **ACTIVE**

Execution Interval (min): 20

Back Analysis Interval (min): 45

Regulation Parameters

Reference Class: Utenze TN

Controller: 215 XC 1015D TN

Set Point: Set ASP

Worst Case Set: 80 (%Cool)

Dead Band: 4 (%)

Initial Set Value: 2.3 (bar)

Min Set Value: 2.1 (bar)

Max Set Value: 3.1 (bar)

Release Gain: 30 (mbar / %Cool)

Call Gain: 50 (mbar / %Cool)

Simulation Mode: ☐ Acquire Data Only

Enable Engine Disable Engine Close



# The Range - SYSTEMS

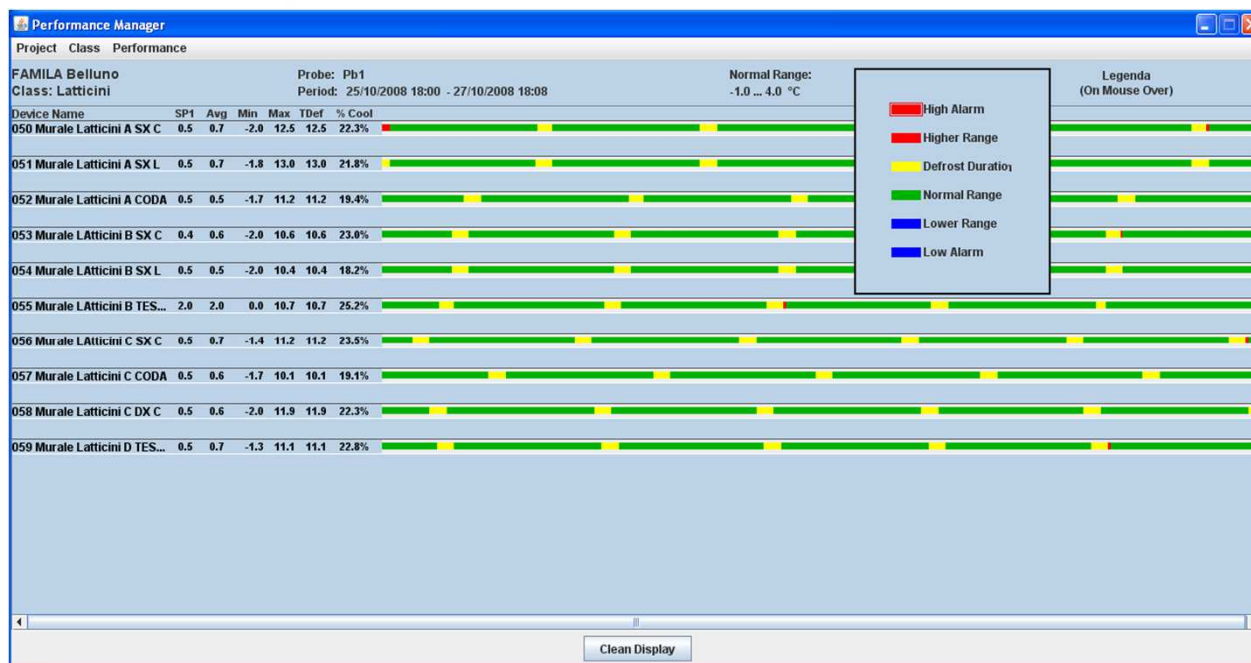


## XWEB500

### ALARMS and CONTROL



- Performance meter
  - Average temps
  - Peaks
  - Defrosts
  - Alarms
  - Temperature drift



dixell®

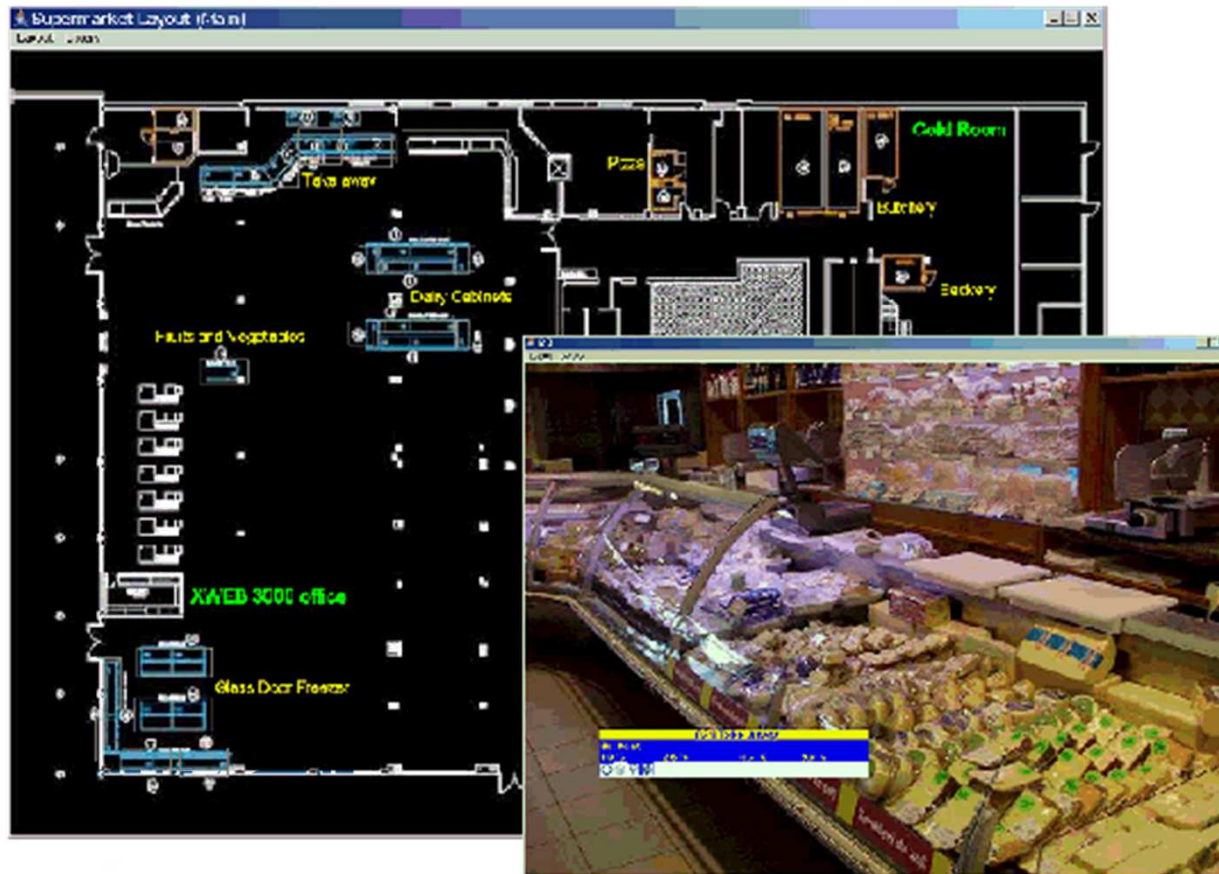
  
**EMERSON**  
Climate Technologies

# The Range - SYSTEMS



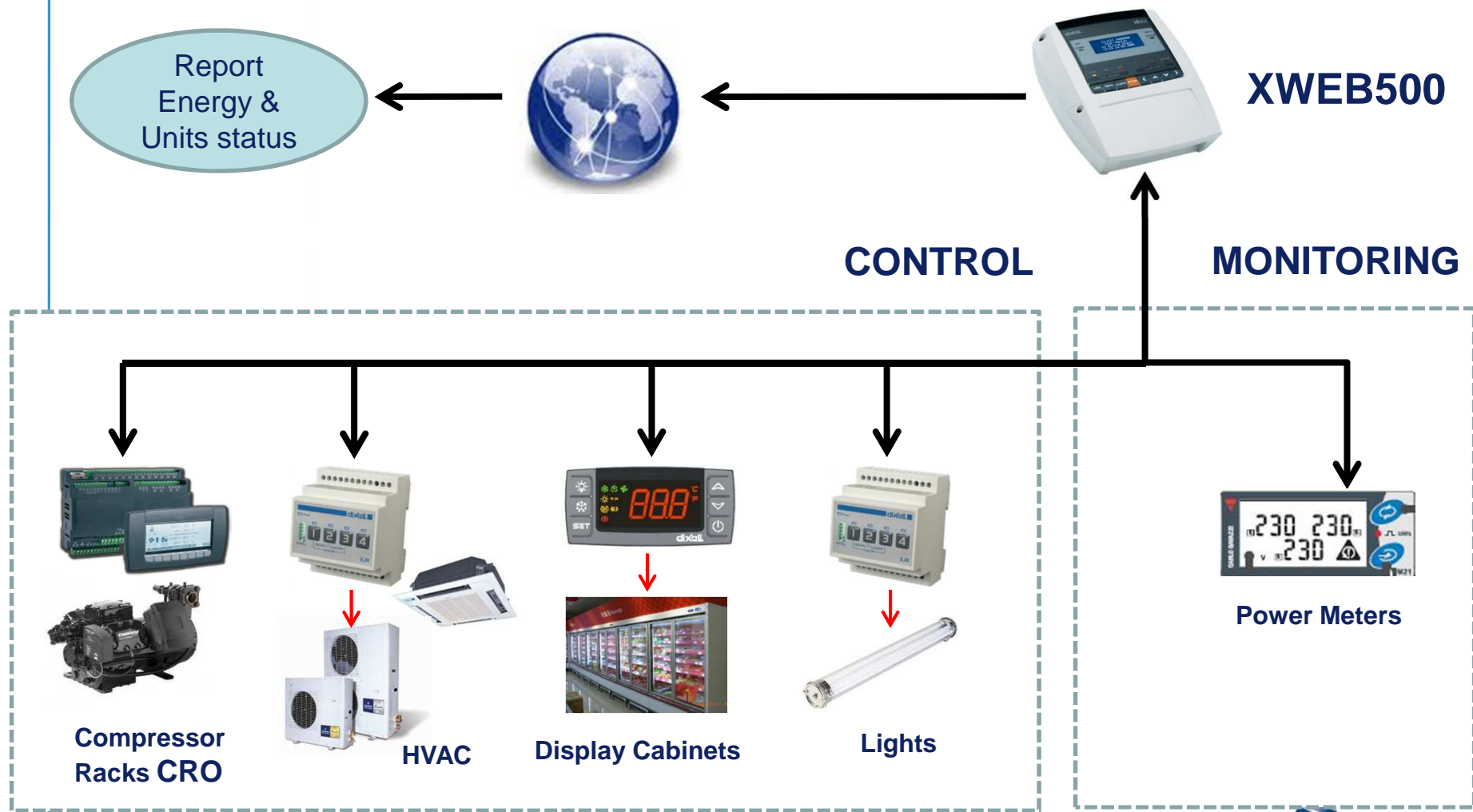
## XWEB500

### ALARMS and CONTROL



- Store maps
  - Temperatures
  - Units Status
  - Alarms
  - Commands
  - ...

# The Range - SYSTEMS



**dixell**

**EMERSON**  
Climate Technologies

# *The Range - SYSTEMS*



## **XWEB3000**

**INDUSTRIAL GRADE  
ALARMS and CONTROL**

- **Big installations: Supermarkets, Hypermarkets, Storage warehouses**
- **TCP/IP connectivity: Ethernet (LAN, Internet), Dial-up (via built-in/external modem)**
- **KVM connectivity for local operators**
- **Up to 247 Modbus devices connectable**



# *The Range - SYSTEMS*



## **XWEB5000**

**INDUSTRIAL GRADE  
ALARMS and SUPERVISION**

- **Enhanced Energy Saving Functions**
  - **CRO**
  - **Dew Point Control**
  - **Supervision**



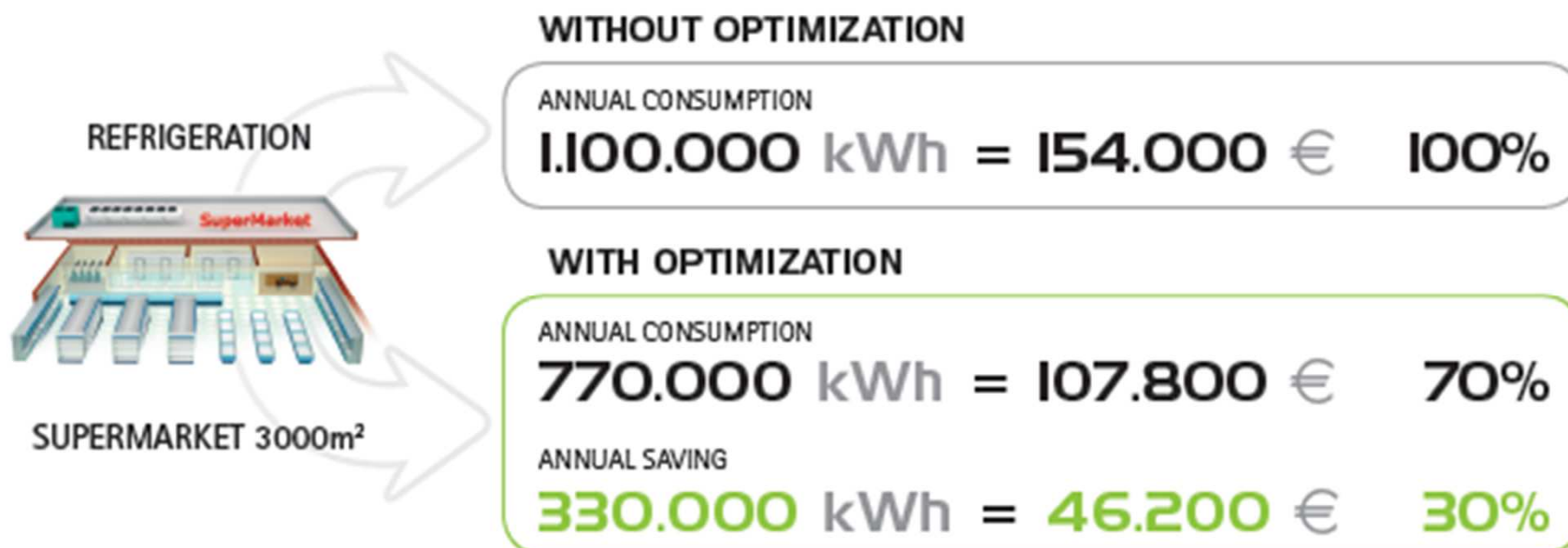
# The Range - SYSTEMS



## XWEB5000



- CRO Compressor Rack Optimizer
  - Suction pressure optimization
  - Suitable with mechanical, modulating and stepper valves



The average electric Italian rate applied for the consumption calculation is of 0,14€/kWh.



# The Range - SYSTEMS

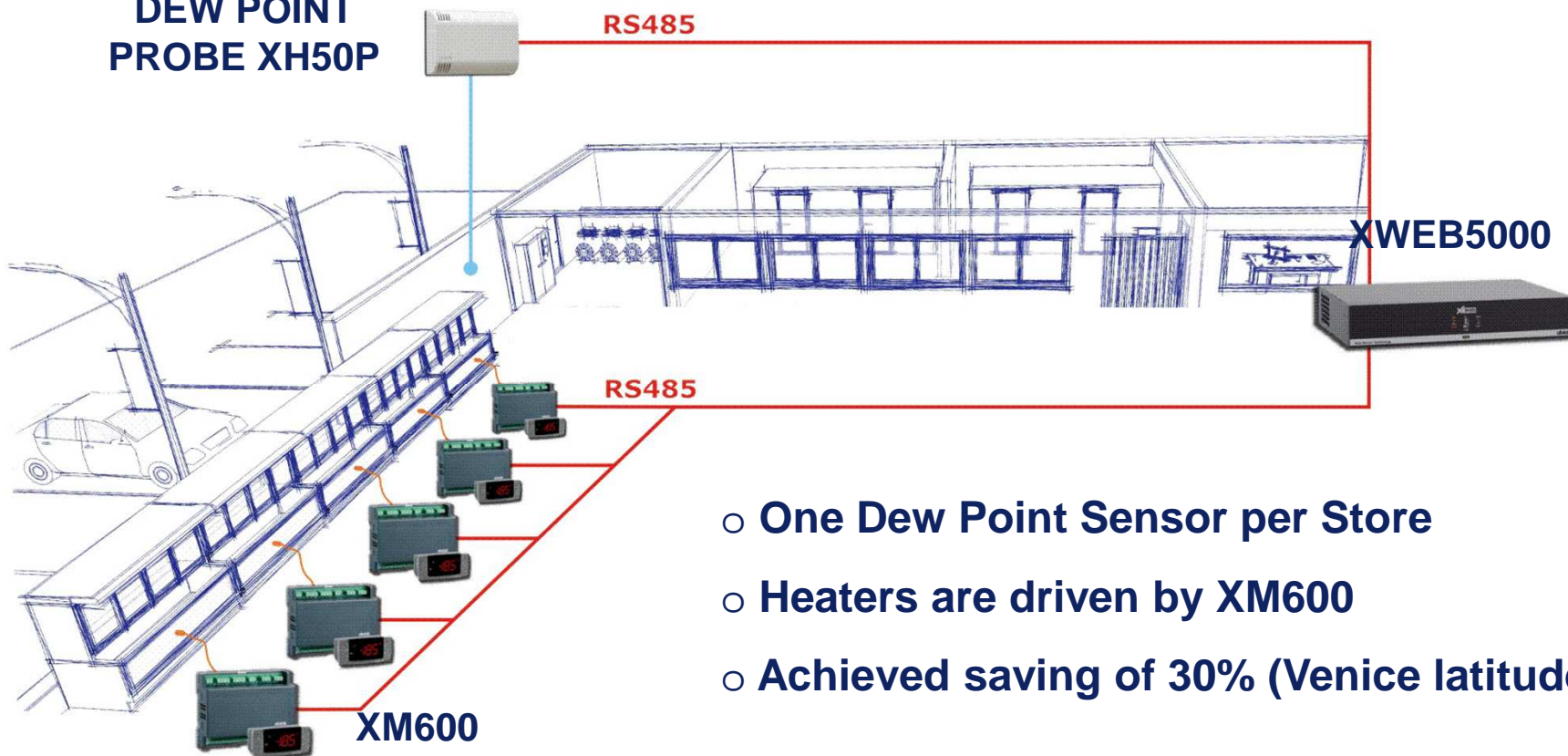


## XWEB5000



**INDUSTRIAL GRADE  
ALARMS and SUPERVISION**

**DEW POINT  
PROBE XH50P**



- One Dew Point Sensor per Store
- Heaters are driven by XM600
- Achieved saving of 30% (Venice latitude)

# The Range - SYSTEMS

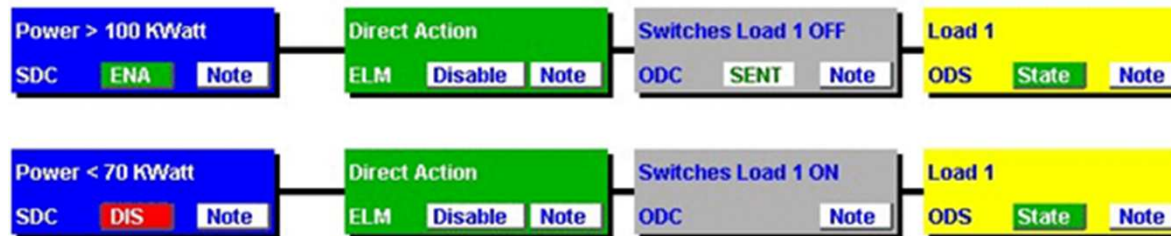


## XWEB5000



### INDUSTRIAL GRADE ALARMS and SUPERVISION

Switch a load ON & OFF according to power consumption



When Emergency power generator is ON

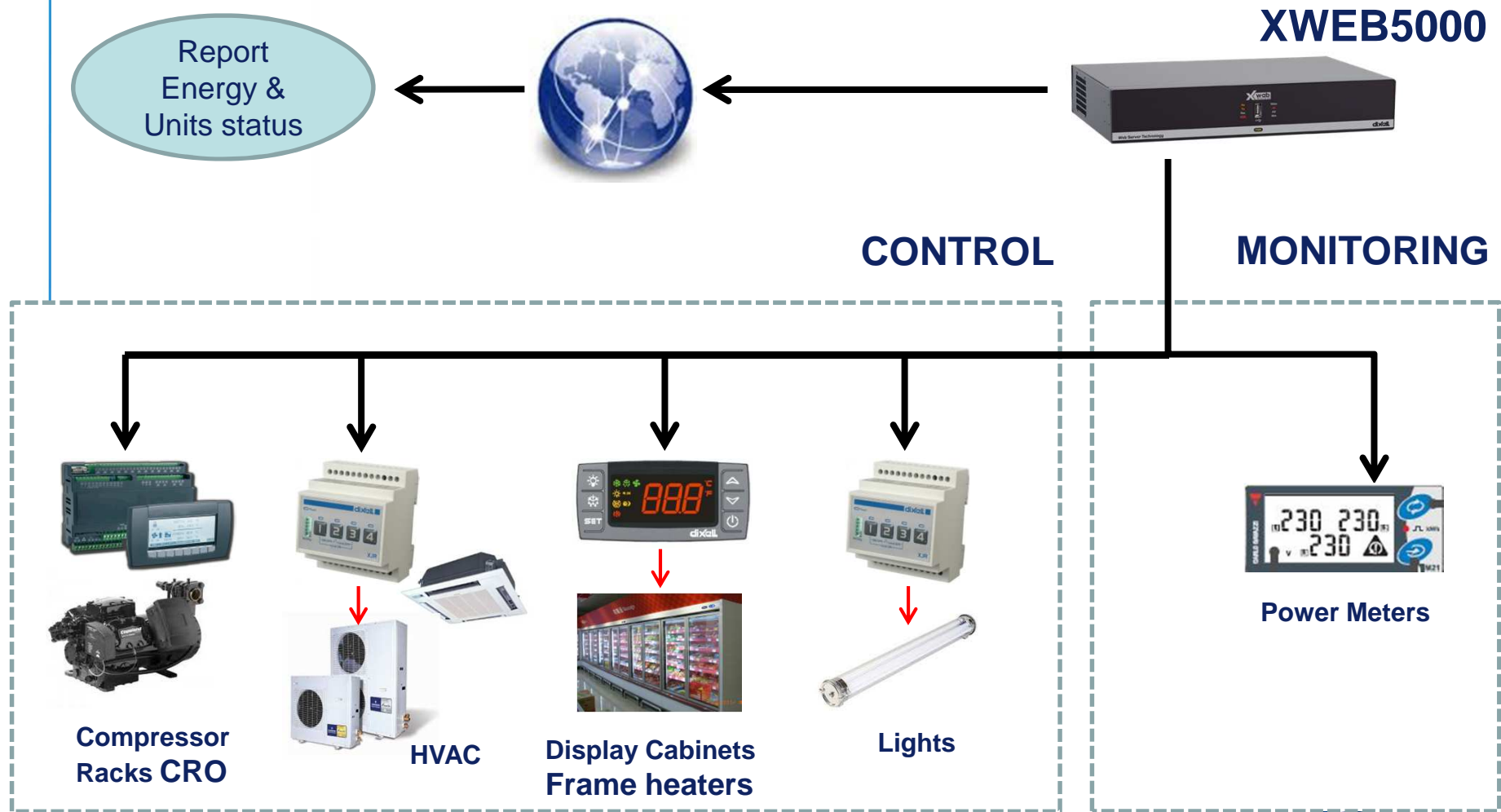


When Emergency power generator is OFF



- Supervision blocks
- Fast deployment
- Immediate use
- ES management
- Critical situations support

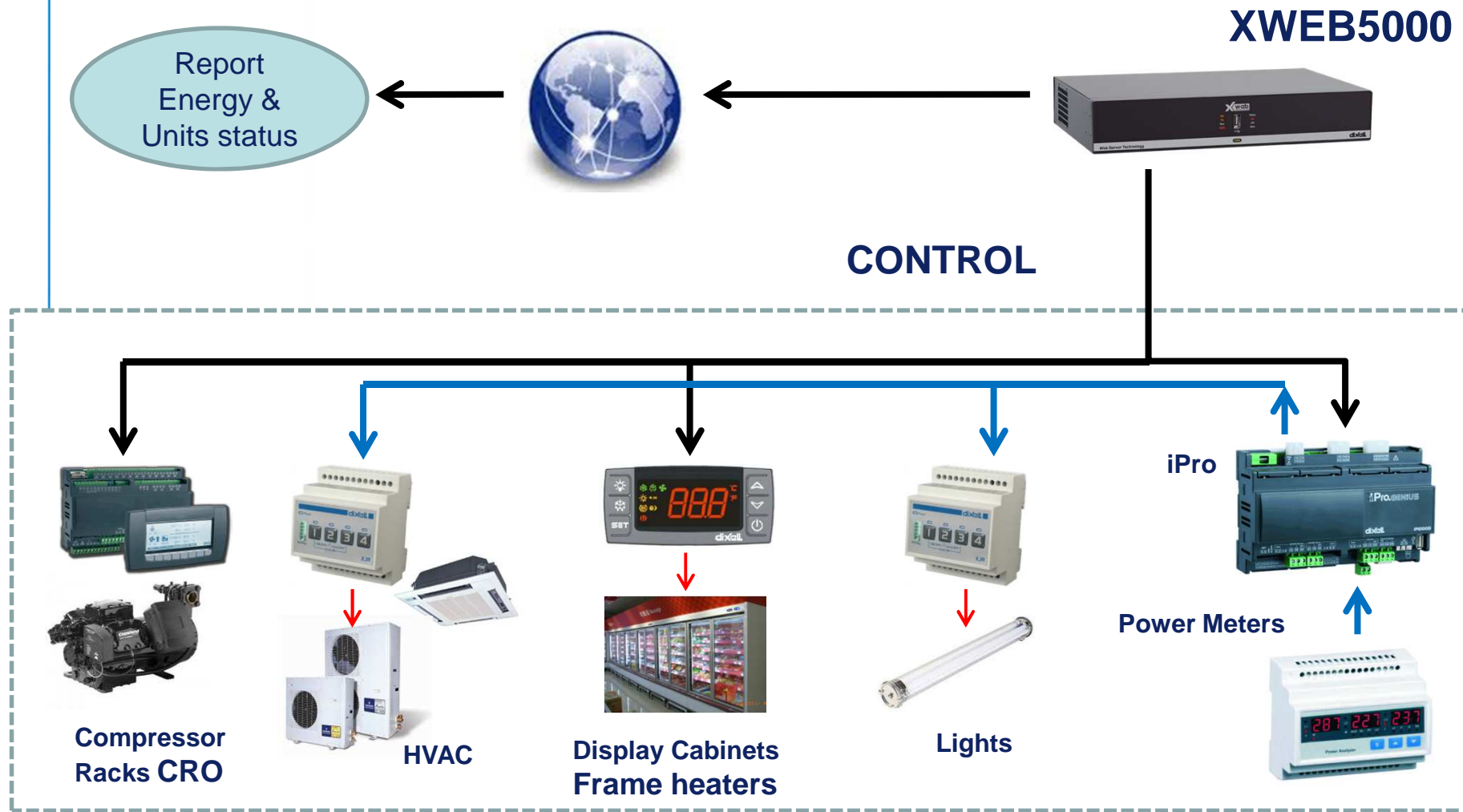
# The Range - SYSTEMS



**dixell**

**EMERSON**  
Climate Technologies

# The Range - SYSTEMS



# The Range - SYSTEMS



## CENTRALIZED ALARMS MANAGEMENT SOFTWARE

- Alarms management and reporting by e-mail and SMS
- Different logics for increasing alarms severity
- Alarms Statistics
- Geo location
- Direct access to the local XWEBs

